



RIVINIUS SERIES

# R600c

**BASE MATERIAL SPREADER**  
PARTS & INSTALLATION MANUAL



**"THE ROCK BOX"**



# RIVINIUS SERIES

# R600c

## BASE MATERIAL SPREADER PARTS & INSTALLATION MANUAL

### INDEX

---

Installation Instructions .....	3
Operating Instructions .....	4
Hopper Group .....	5
Strike-Off Group .....	6
Oscillating Push Beam Group .....	7
Hydraulic Group .....	8-9
Rigid Push Beam Group .....	10
24" Push Roller Group .....	11
40" Push Roller Group .....	12
Hitch Group .....	13
Wheel Group .....	14-15
Bucket Adaption Kit .....	16

**DOMOR EQUIPMENT EUREKA, IL 61530 USA**



## INSTALLATION INSTRUCTIONS



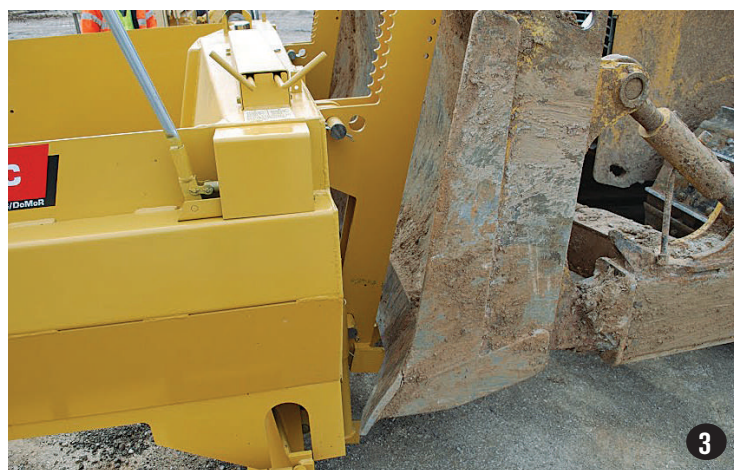
Spreader should be parallel with the ground and standing on the parking stands located at the back of the spreader. Wheels should be in the straight forward position.

**See Fig. 1**



Hitch must be installed on the back of the spreader prior to attaching to dozer blade or bucket. Install bottom end first using the 1-1/2" pins following with the top one in the middle hole. Do same to other side and then put cotter keys in bottom pins.

**See Fig. 2**



Position tractor at rear of spreader and place cutting edge of blade /bucket into spurs, located on bottom of the mounting brackets. Remove the two top pins from the mounting brackets to allow brackets to rest against the top edge of blade/bucket

NOTE: Blade/bucket cutting edge should be in spurs firmly and mounting brackets should be resting against top of tractor blade/bucket before attaching blade/bucket clamps.

**See Fig. 3**



Place plate mounting clamp on top of blade/bucket back to determine position. Attach mounting clamp brackets. Slip clamp up into brackets; put "J" bolt through clamp and hook on front of spreader mounting brackets and tighten. Insert upper pins into nearest holes. After this has been done on both sides, lift spreader with tractor blade/bucket several times and the retighten.

**See Fig. 4 & Fig. 5**

## OPERATING INSTRUCTIONS

Adjust front wheel so spreader box is parallel to ground at all times. **See Fig. 1**

**Example:** For a 10 foot spread, spreader box should be adjusted close to the ground. For wide spreads, spreader box should be adjusted as high as possible to let natural fall of material help feed material to spreader wing doors. Adjust doors to get continual flow of material from moldboard onto doors. Fine adjustments of the moldboard may be obtained by using the valve controls and hand pump located on the left side of the machine. Front wheels can be adjusted in or out by the pull of a pin. For the best results and for easy pushing of hauling units, adjust push rollers one inch below center line of tires on hauling unit.

**NOTE:** For windrow spreading, remove the four capscrews fastening push beam to side of spreader and swing push beam 180° to top position and replace capscrews.

## LUBRICATING INSTRUCTIONS

	<u>No. Fittings</u>	
Wheels	0	Pack with fibrous wheel bearing grease
Push rollers	4	Daily-Multi-Purpose grease
Door Hinges	8	Daily Multi-Purpose grease
Fork Spindles	2	Daily Multi-Purpose grease
Hydraulic Tank		Capacity- 1 gal. Use #10 Ser 3 MS oil

Fill the hydraulic tank with #10 Ser MS oil and fully extend and retract both cylinders, the refill the hydraulic tank.

The cylinders are controlled with the two levers on the left of the machine.

Left side lever controls, left cylinder,

Right side lever controls, right cylinder.

Pushing in to detent on either lever, raises blade.

Pulling out to detent on either lever, lowers blade.

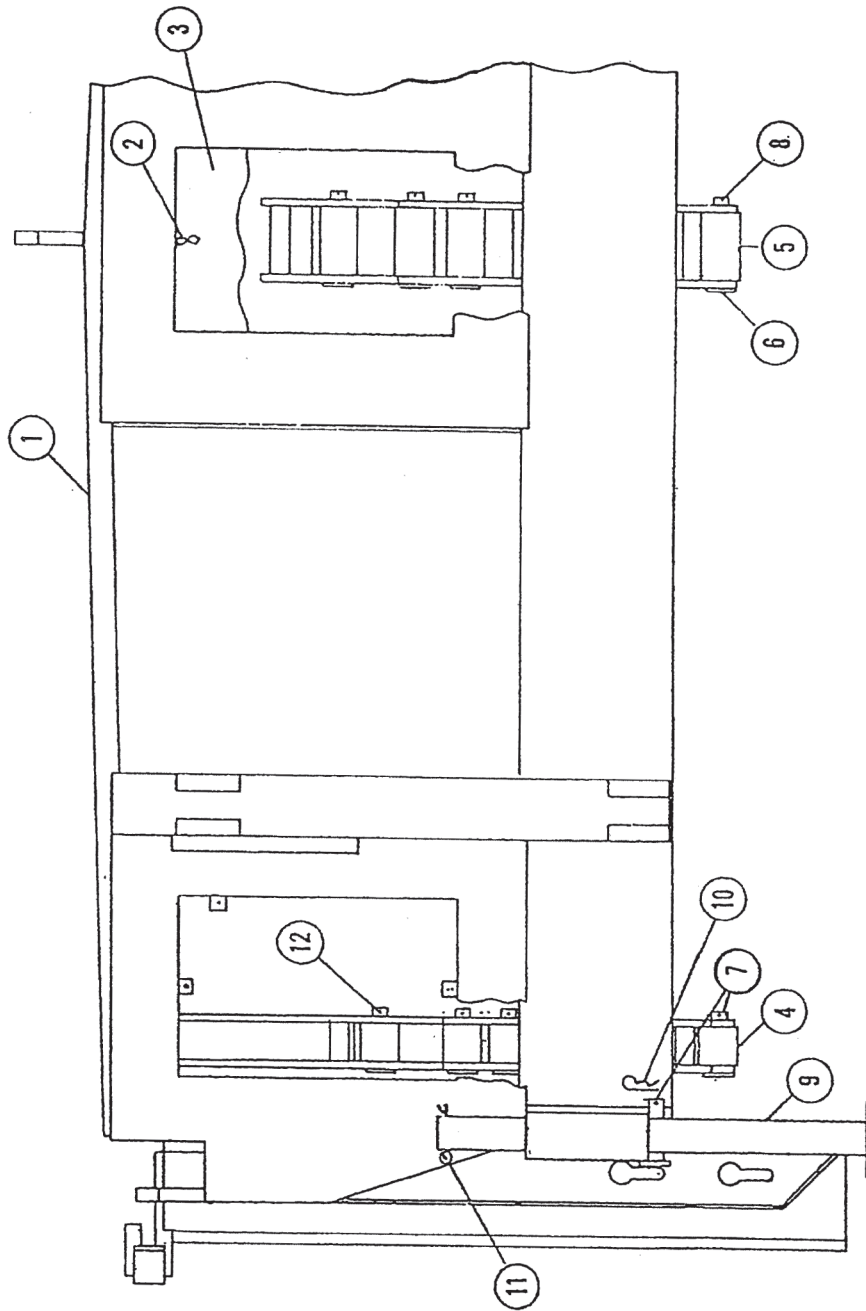
Pushing to center detent, returns valve to neutral position.

You can obtain your fine adjustments by leaving one lever in neutral while adjusting the other up or down.

**NOTE:** LEVERS MUST BE IN NEUTRAL POSITION AFTER GRADE DEPTH IS SET.

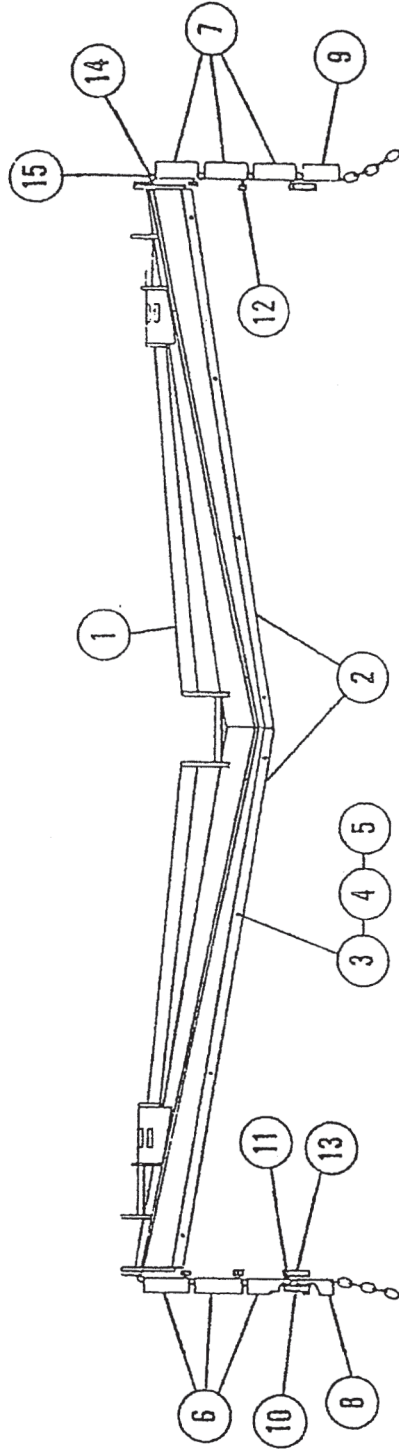
BLADE ON DOZER SHOULD BE IN FLOAT POSITION

**HOPPER GROUP 61000101-R600B**  
**HOPPER GROUP 61000102-R600C**



<u>Item</u>	<u>Part No.</u>	<u>Description</u>	<u>Qty.</u>	<u>Item</u>	<u>Part No.</u>	<u>Description</u>	<u>Qty.</u>
1	61000701-R600B	Hopper Assy	1	7	60136900	Pin Assy	10
2	61000702-R600C	Screw -Thumb	3	8	70347911	Cotter	4
3	60328100	Door Assy	3	9	60132000	Stand Assy	2
4	60153800	Roller-Outer	8	10	60326900	Clip-hairpin	2
5	60146100	Roller-Center	4	11	60292600	Cotter	2
6	60146200	Pin Assy	4	12	70347911	Cotter	8

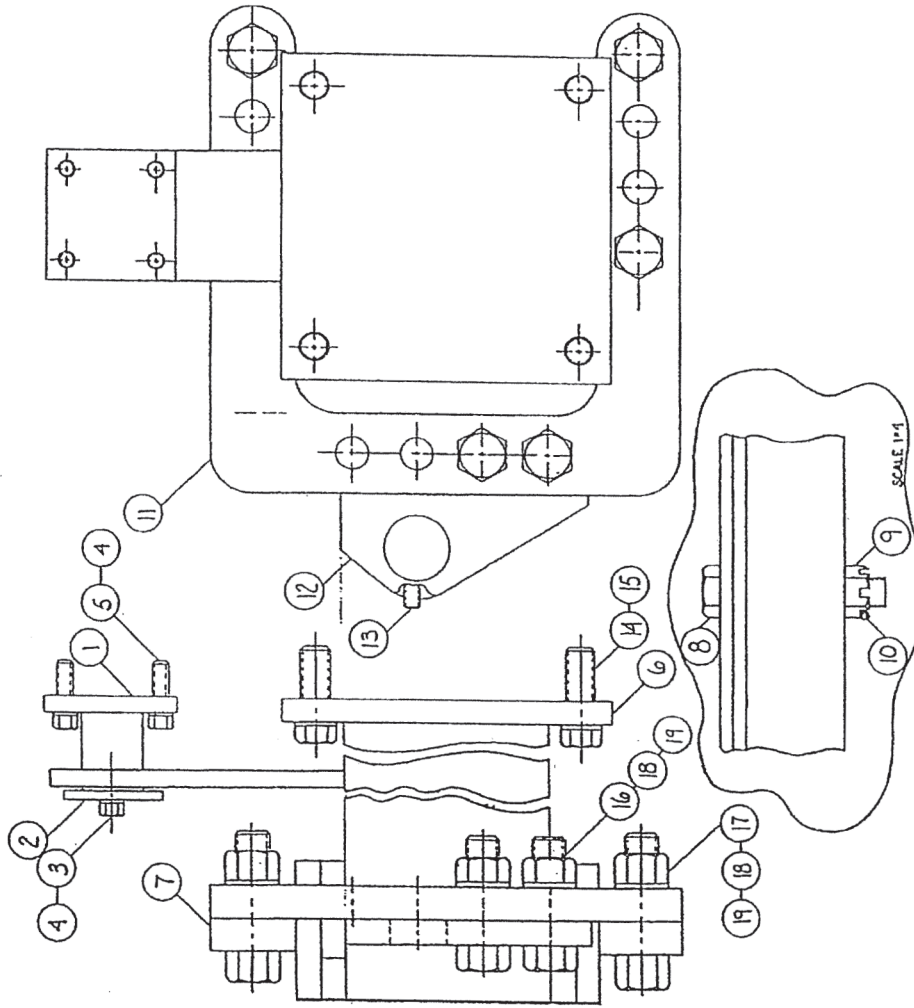
# STRIKE-OFF GROUP 601300001



Item	Part No.	Description	Qty.	Item	Part No.	Description	Qty.
1	60134001	Moldboard as	1	9	60134200	Door as Frt L	1
2	60139901	Cutting Edge	2	10	60137400	Lever assy-door	6
3	60111600	Bolt	8	11	60030100	Cotter pin	6
4	60073600	Washer 1/2"	8	12	60283100	Washer	8
5	60086600	Nut	8	13	60139200	Plate-latch	2
6	60134300	Door as RearR	3	14	60134500	Pin assy	8
7	60134400	Door as RearL	3	15	60079000	Fitting-grease	8
8	60134100	Door as Frt R	1				



# OSCILLATING PUSH BEAM GROUP 60130203



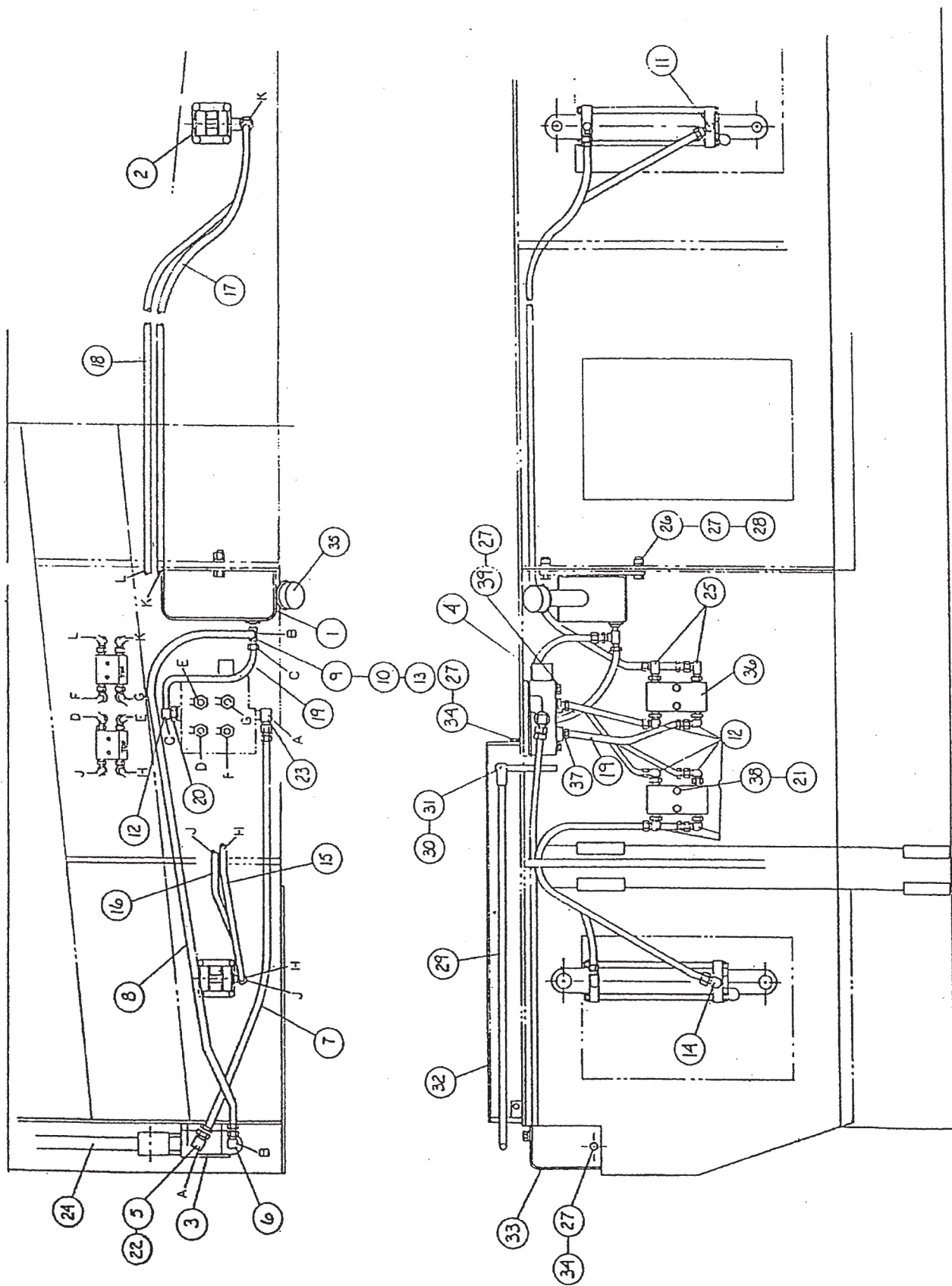
Item	Part No.	Description	Qty.	Item	Part No.	Description	Qty.
1	60135600	Pivot Assy	2	11	61455300	Pivot Bracket	4
2	60143300	Pivot Cap	2	12	60142300	Bracket	4
3	60281500	Bolt 1/2-13x1	2	13	60297800	Setscrel 1/2x3/4	4
4	60035100	Lwasher 1/2"	10	14	60289300	Bolt 3/4 x 3	8
5	60100200	Bolt 1/2x1-3/4	8	15	60294700	Lwasher 3/4"	8
6	61454800	Beam Weldmt	1	16	60287500	Bolt 1-8x3	8
7	61455000	Plate Weldmt	2	17	60286900	Bolt 1-8x3-1/2	16
8	61455200	Pivot Pin	1	18	60294800	LWasher 1"	24
9	60326500	Castl Nut 13/4	1	19	60656400	Nut 1"-8	24
10	60292600	Cotter Pin	1				

# HYDRAULIC GROUP 60967100

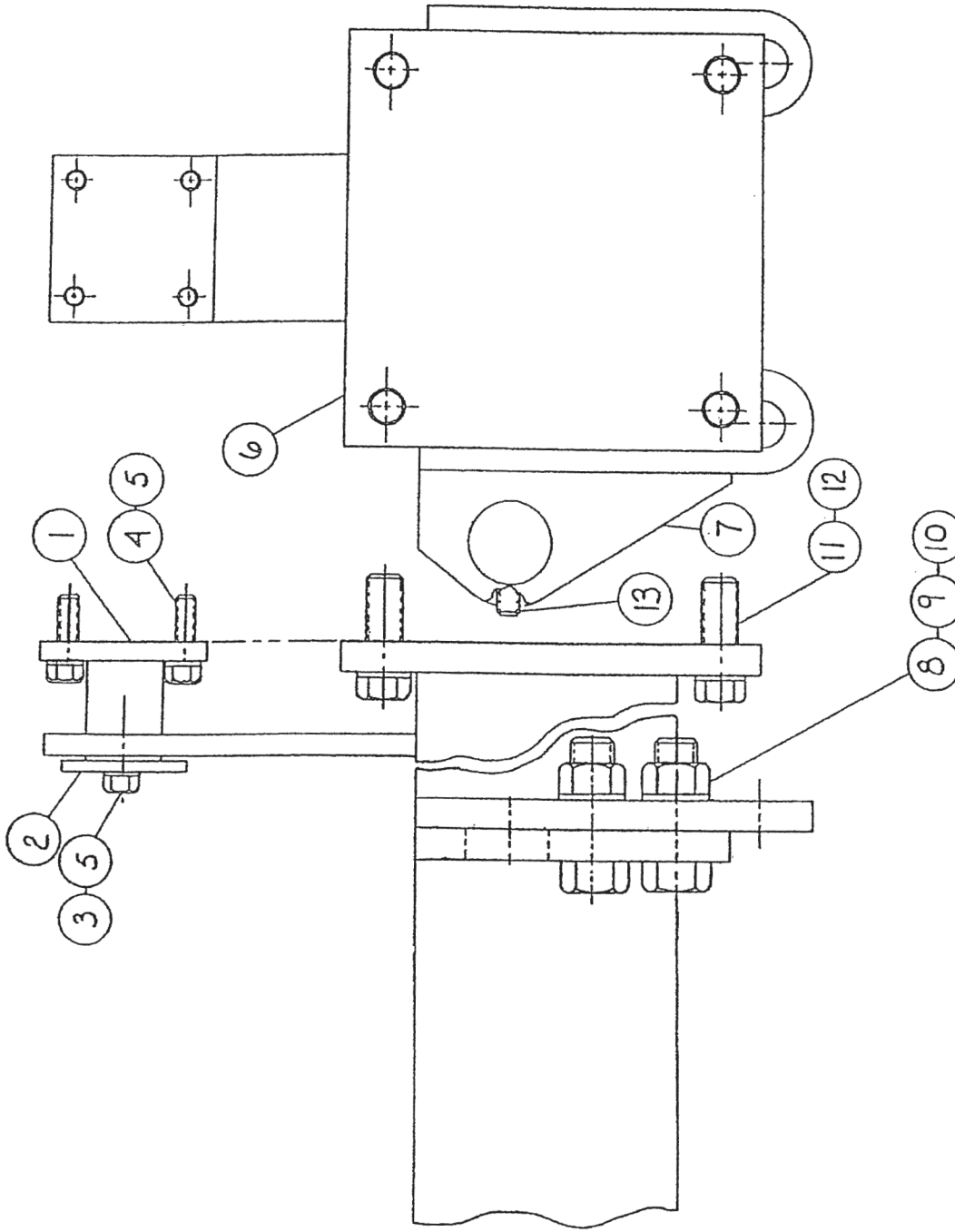
See Diagram on Page 9.

<u>Item</u>	<u>Part No.</u>	<u>Description</u>	<u>Qty.</u>	<u>Item</u>	<u>Part No.</u>	<u>Description</u>	<u>Qty.</u>
1	60967500	Tank assy	1	21	60294600	Lwasher 5/16"	8
2	60967200	Cylinder assy	2	22	61426200	Fitting	1
3	61425900	Pump	1	23	60322600	Adapter	1
4	60967400	Valve assy	1	24	60973700	Lever	1
5	61426100	Adapter 90°	1	25	61427600	Adapter 90°	2
6	61426000	Adapter 90°	1	26	60030500	Bolt	2
7	60996900	Hose assy	1	27	60095100	Lwasher	10
8	60745800	Hose assy	1	28	60095000	Nut	2
9	60109300	Tee	1	29	60973500	Lever	2
10	14612000	Nipple	1	30	60079100	Pin-clevis	2
11	60997000	Adapter 90°	2	31	60293600	Cotter pin	2
12	70027012	Adapter 90°	7	32	60996300	Guard assy	1
13	60749400	Str Adapter	1	33	60995700	Guard assy	1
14	60749100	Adapter 90°	2	34	60077800	Bolt	5
15	60746000	Hose assy	1	35	60100300	Breather	1
16	60725800	Hose assy	1	36	60793900	Valve	2
17	60745600	Hose assy	1	37	60109500	Bushing	4
18	60745500	Hose assy	1	38	61415200	Bolt	4
19	60745700	Hose assy	5	39	60034900	Bolt	3
20	60075300	Bushing	1				



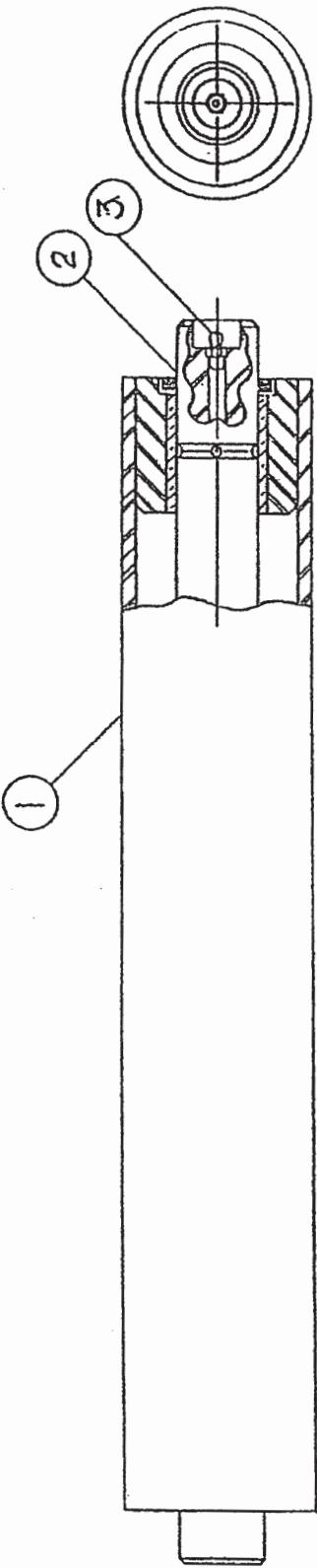


# RIGID PUSH BEAM GROUP 60130204



Item	Part No.	Description	Qty.	Item	Part No.	Description	Qty.
1	60135600	Pivot Assy	2	8	60287500	Bolt 1-8x3	8
2	60143300	Pivot Cap	2	9	60294800	Lwasher 1"	8
3	60281500	Bolt 1/2-13x1	2	10	60656400	Nut 1"-8	8
4	60100200	Bolt 1/2-1-3/4	8	11	60289300	Bolt 3/4 x 3	8
5	60035100	LWasher 1/2"	10	12	60294700	Lwasher 3/4"	8
6	60135503	Beam Weldmt	1	13	60297800	Setscre 1/2x 3/4	4
7	60142300	Bracket	4				

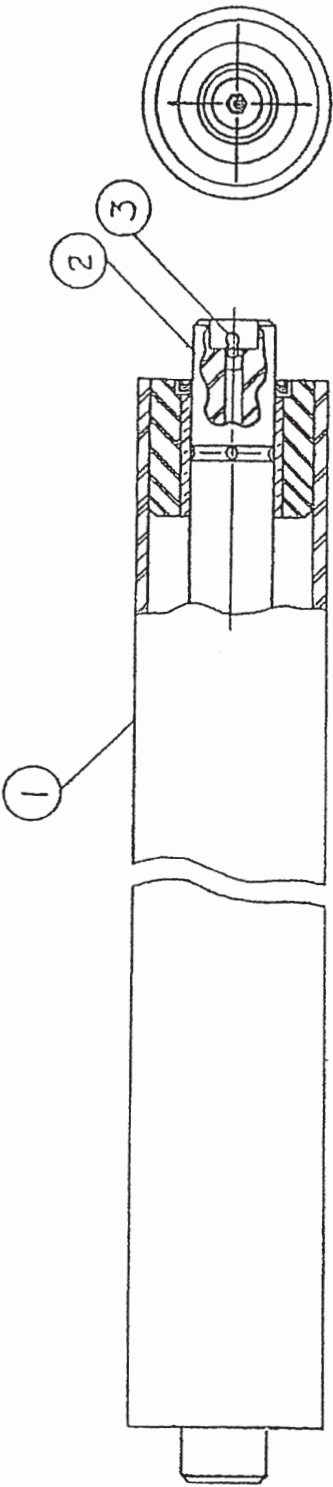
24" PUSH ROLLER GROUP 61455500



<u>Item</u>	<u>Part No.</u>	<u>Description</u>	<u>Qty.</u>
1	60131002	24" Roller	1
2	60327302	Shaft	1
3	60294000	Grease Fitting	2

(2) Units per machine

40" PUSH ROLLER GROUP 61455600

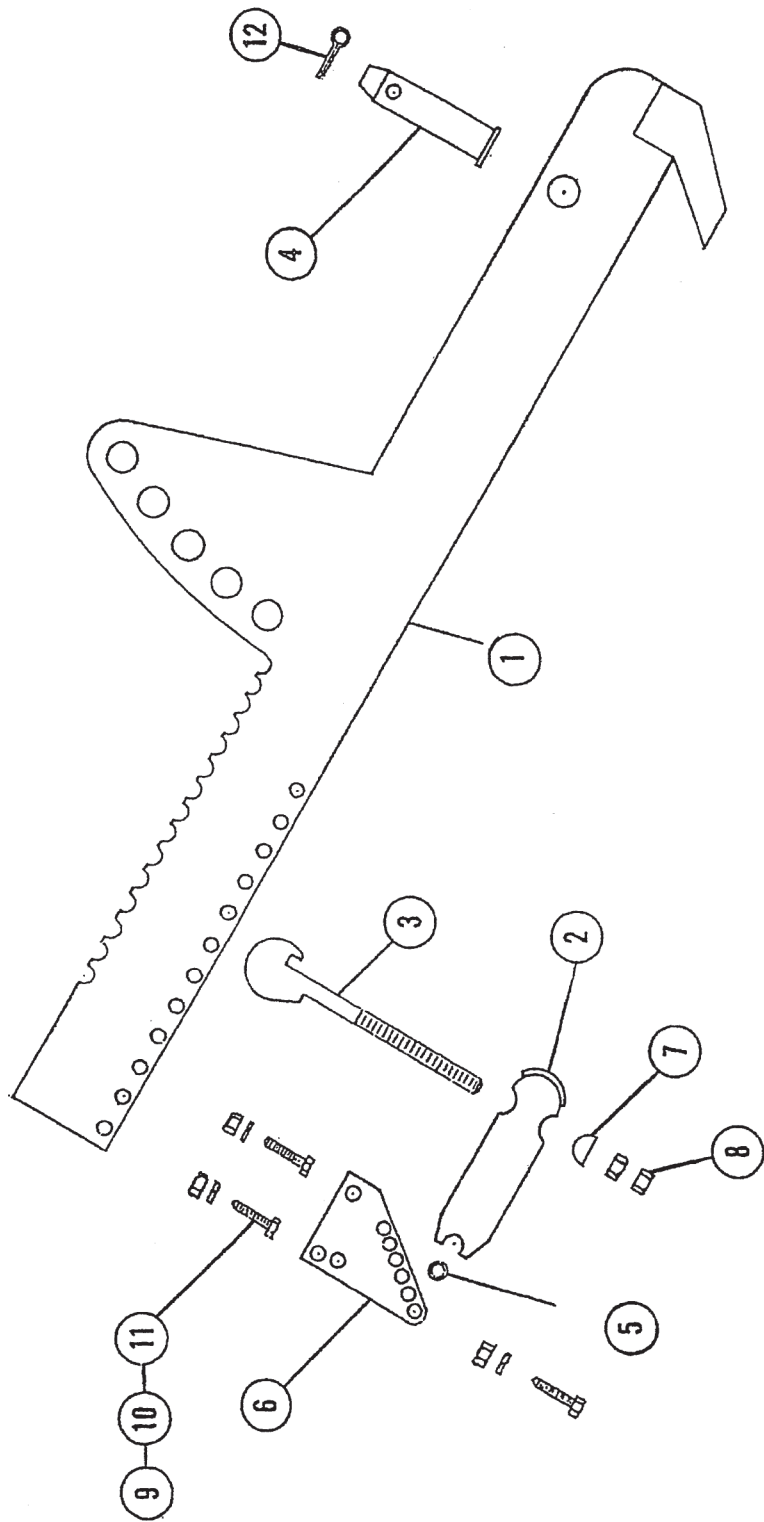


Item	Part No.	Description	Qty.
1	60131001	40" Roller	1
2	60327301	Shaft	1
3	60294000	Grease Fitting	2

(2) Units per machine



HITCH GROUP 60130400

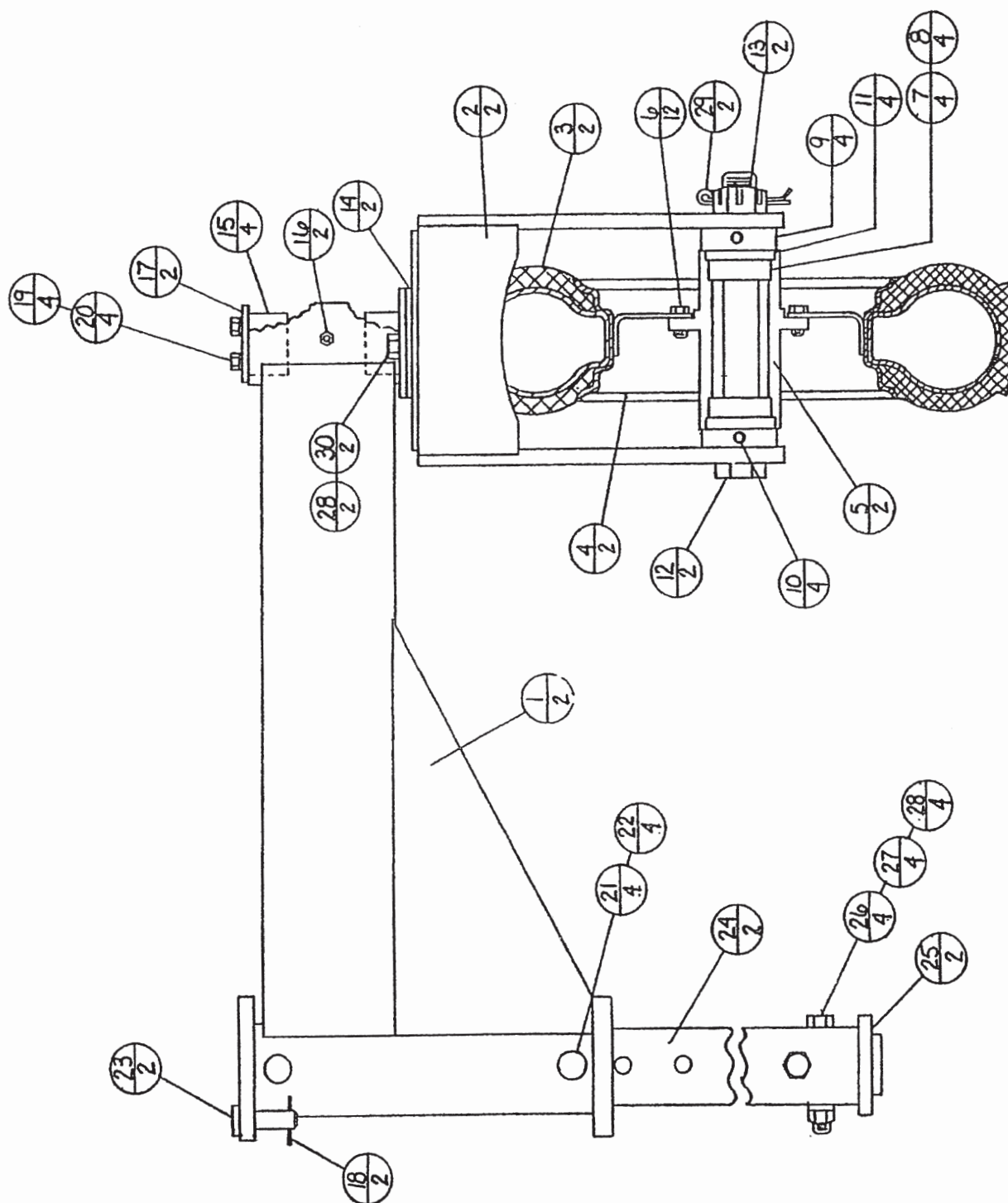


Item	Part No.	Description	Qty.	Item	Part No.	Description	Qty.
1	60136000	Hitch assy	2	7	60327700	Adapter	4
2	60328000	Bracket assy	4	8	60656400	Nut	8
3	60327500	Bolt assy	4	9	60290700	Bolt	12
4	60137000	Pin assy	4	10	60613400	Nut	12
5	60327800	Spacer	4	11	60281600	Lwasher	12
6	60327900	Plate-Mtg	8	12	60292600	Cotter Pin	4

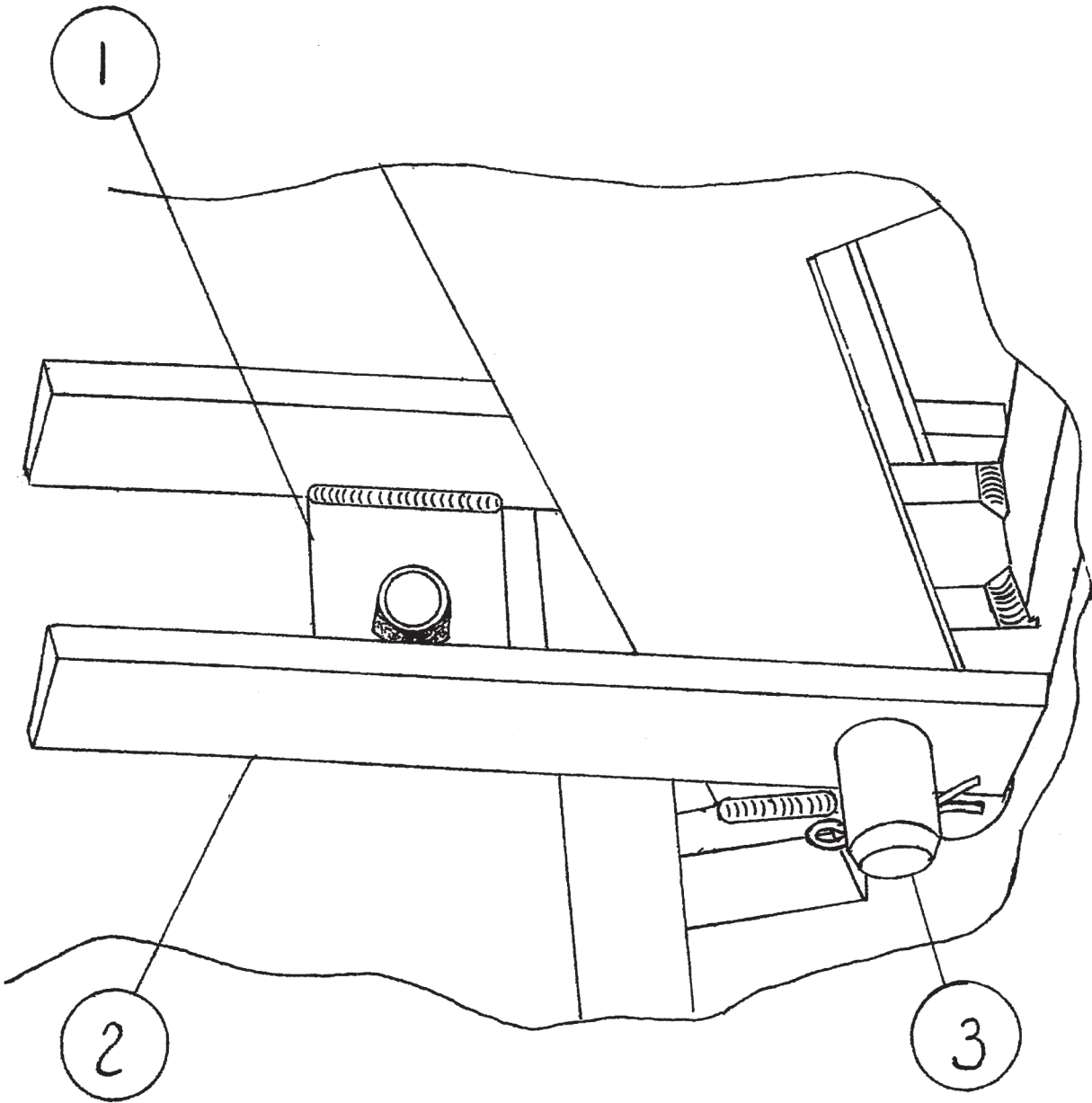
## WHEEL GROUP 60130101

See Diagram on Page 15.

<u>Item</u>	<u>Part No.</u>	<u>Description</u>	<u>Qty.</u>	<u>Item</u>	<u>Part No.</u>	<u>Description</u>	<u>Qty.</u>
1	60134801	Bracket assy	2	16	60294000	Grease Fitting	2
2	60134601	Caster-Wheel	2	17	60326801	Spindle Cap	2
3	60151801	Tire	2	18	60326900	Hair Pin	2
4	60151601	Rim	2	19	60281500	Bolt	4
5	60135100	Hub-Wheel	2	20	60035100	Lwasher	4
6	60327000	Bolt-Wheel	12	21	60137100	Pin-Adj.	4
7	60326200	Cone	4	22	60325500	Hair Pin	4
8	60326100	Cup	4	23	60132600	Pin-Clevis	2
9	60327100	Sleeve	4	24	60135000	Tube-Adj.	2
10	60070100	Setscrew	4	25	60134900	Retainer	2
11	60326300	Seal	4	26	60287700	Bolt	4
12	60326401	Axle	2	27	60295900	Nut	4
13	60326500	Nut	2	28	60294700	Lwasher	4
14	60326601	Washer	2	29	60292600	Cotter Pin	2
15	60326702	Bearing	4	30	60285800	Bolt	2



**BUCKET ADAPTATION KIT 61454400**



<u>Item</u>	<u>Part No.</u>	<u>Description</u>	<u>Qty.</u>
1	61454500	Base Plate	2
2	61454600	Ear Plate	4
3	60137001	Pin Weldment	2



# R600C

RIVINIUS/DoMoR

# DoMoR

RIVINIUS

## **BENEFITS**

- Reduce material loss**
- Maintains moisture content**
- Eliminate material segregation**
- Two ways to crown roads**
- Requires fewer laborers than conventional methods**
- Attaches to your existing equipment in 20 minutes**
- Works with dozers and wheel loaders**
- Accepts tandem trucks and up to mid-size off road trucks**
- Compatible with bulldozers and wheel loaders**

## **GENERAL MACHINE SPECIFICATIONS**

- Weight** 7500lbs
- Overall Length** 8ft, 5in
- Overall Width** 11ft, 4in
- Overall Height** 4ft, 5in
- Inner Length** 6ft, 6in
- Inner Width** 10ft, 6in
- Min. HP** 125
- Spread Minimum** 10ft, 6in
- Spread Maximum** 16ft

